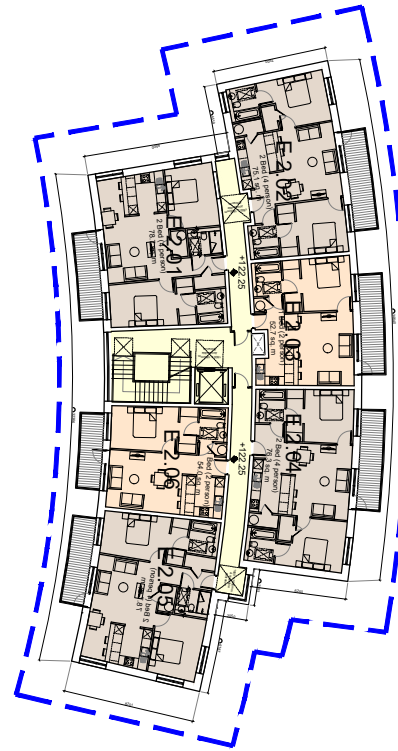


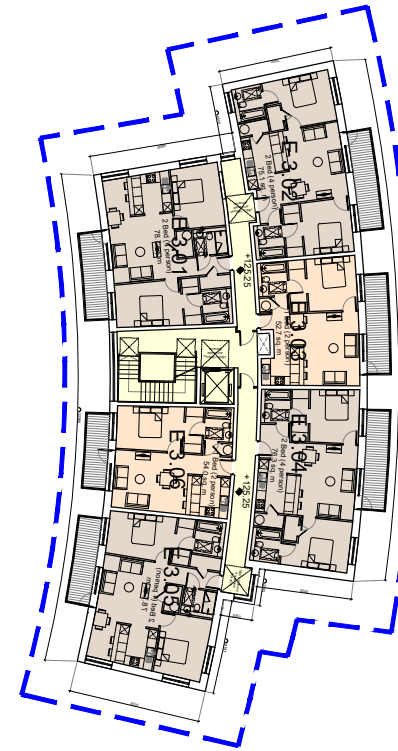
Block E: Ground Floor Plan



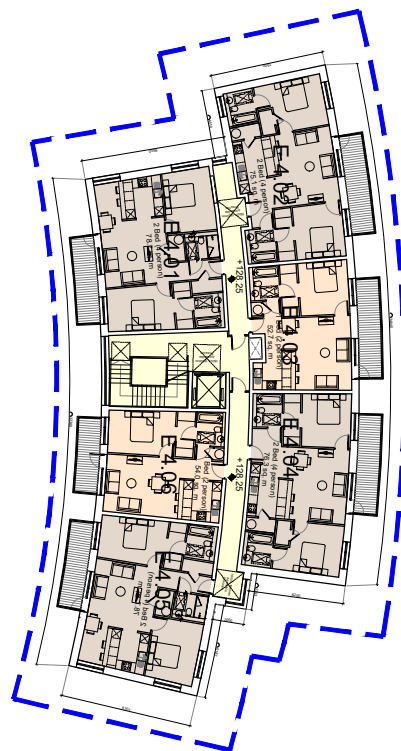
Block E: First Floor Plan



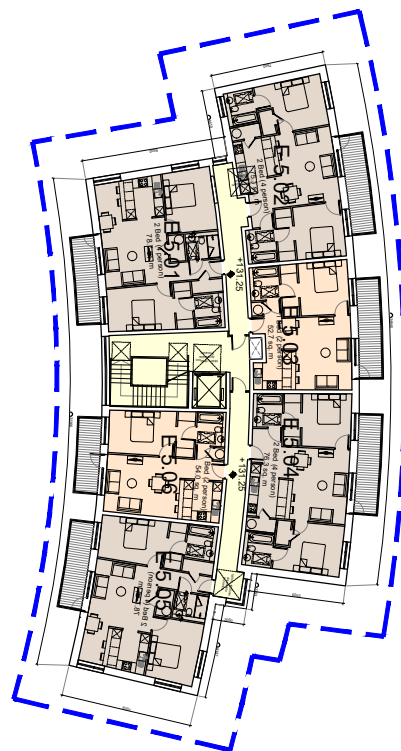
Block E: Second Floor Plan



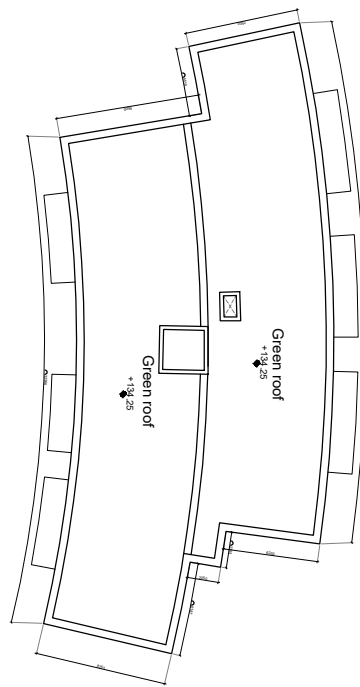
Block E: Third Floor Plan



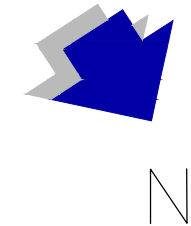
Block E: Fourth Floor Plan



Block E: Fifth Floor Plan



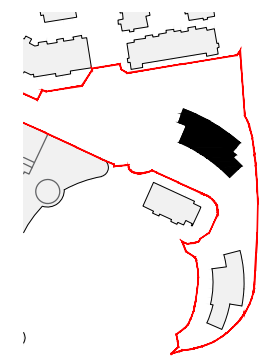
Block E: Roof Floor Plan



GENERAL NOTES

1. COPYRIGHT RESERVED.
2. DO NOT SCALE DRAWING. USE FIGURED DIMENSIONS ONLY.
3. ALL DISCREPANCIES TO BE REPORTED TO ARCHITECT.
4. THE CONTRACTOR IS RESPONSIBLE FOR CHECKING ALL LEVELS AND DIMENSIONS.
5. ALL STRUCTURE TO BE TO STRUCTURAL ENGINEERS DETAILS.
6. ALL MECH & ELEC SERVICES TO SERVICES ENGINEERS DETAILS.
7. ALL PROPRIETARY ITEMS TO BE INSTALLED IN ACCORDANCE WITH MANUFACTURERS INSTRUCTIONS.
8. CONTRACTOR IS RESPONSIBLE FOR THE COORDINATION OF STRUCTURE FINISHES AND SERVICES.

REV	DATE	DESCRIPTION	BY



Keyplan
Not to Scale

- LEGEND
- Application Site Boundary
 - Part V Units



JOHN FLEMING
ARCHITECTS
103 LEESON STREET UPPER, DUBLIN 4.
T: (01) 6689888 E: info@jfa.ie W: www.jfa.ie

CLIENT
OBSF(I) Limited

PROJECT
Housing Development at Citywest
Citywest, South Dublin

DRAWING
Part V
Proposed Plans

SCALE 1:500 JOB NO. 1833

DRAWN BY OC

DATE September 2019

DRAWING NUMBER P-PV-001 REVISION 0

DRAWING LOCATION
w:\18 Jobs\1833\03-planning\31 planning application\312.xref

DRAWING STATUS
PLANNING

