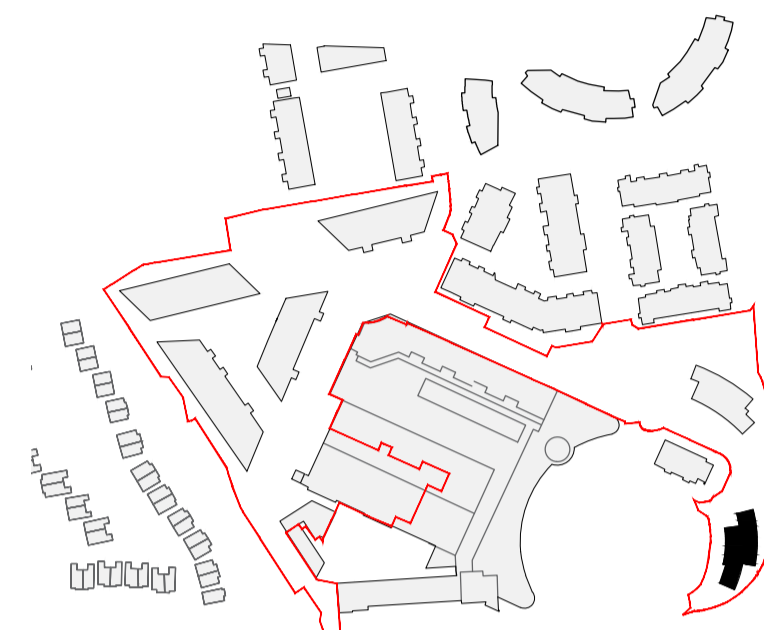


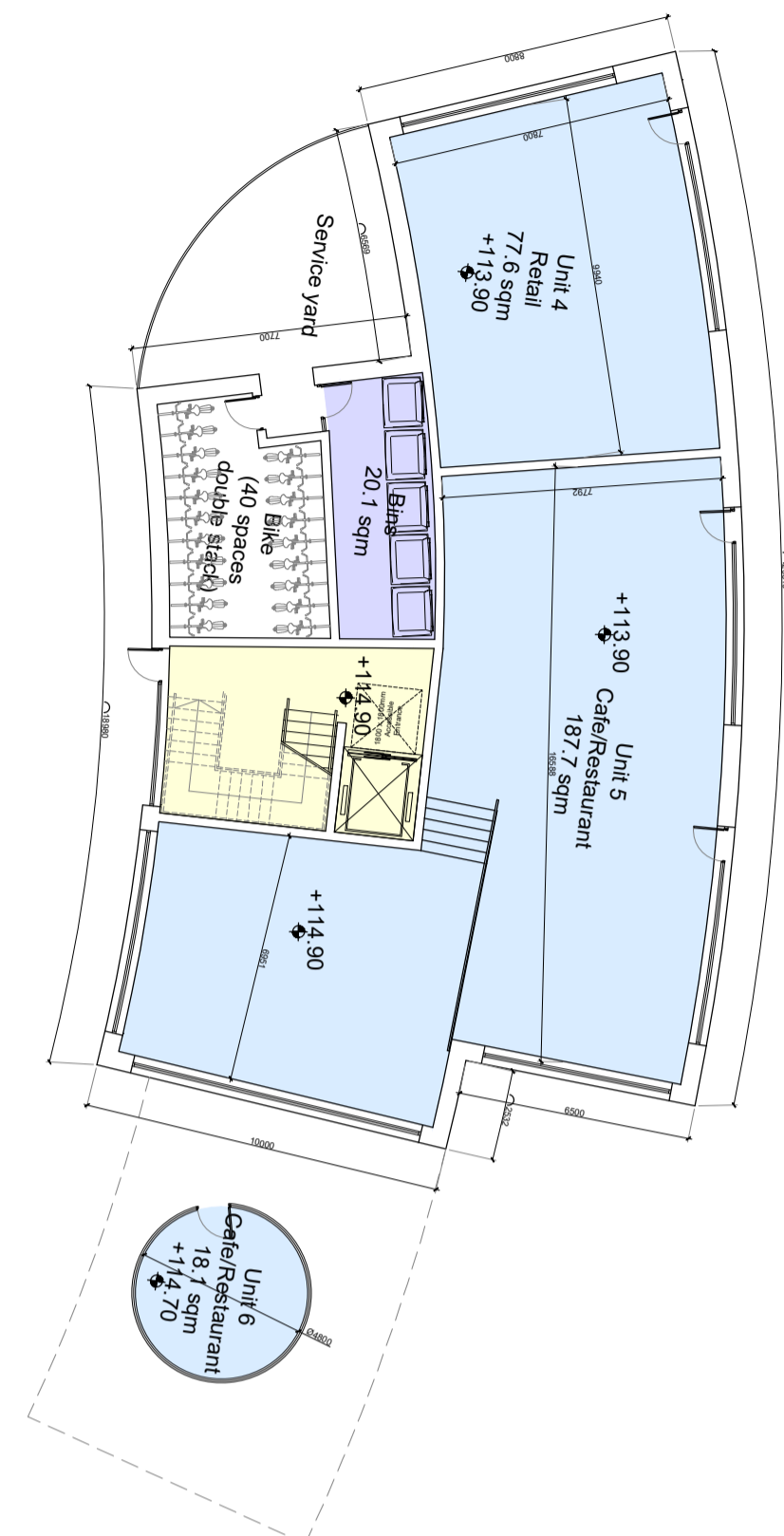
- GENERAL NOTES**
1. COPYRIGHT RESERVED
 2. EXACT SCALE DRAWING. USE FIGURED DIMENSIONS ONLY.
 3. ALL DISCREPANCIES TO BE REPORTED TO ARCHITECT.
 4. THE CONTRACTOR IS RESPONSIBLE FOR CHECKING ALL LEVELS AND DIMENSIONS.
 5. ALL STRUCTURE TO BE TO STRUCTURAL ENGINEERS DETAILS.
 6. ALL MECH & ELEC SERVICES TO SERVICES ENGINEERS DETAILS.
 7. ALL PROPRIETARY ITEMS TO BE INSTALLED IN ACCORDANCE WITH MANUFACTURERS INSTRUCTIONS.
 8. CONTRACTOR IS RESPONSIBLE FOR THE COORDINATION OF STRUCTURE FINISHES AND SERVICES.

REV	DATE	DESCRIPTION	BY



Keyplan
Not to Scale

- LEGEND**
- Application Site Boundary
 - 2 Bed Apart/4 Person
 - 1 Bed Apart/2 Person
 - Retail



Block F: Ground Floor Plan



Block F: First Floor Plan



Block F: Second Floor Plan



Block F: Third Floor Plan



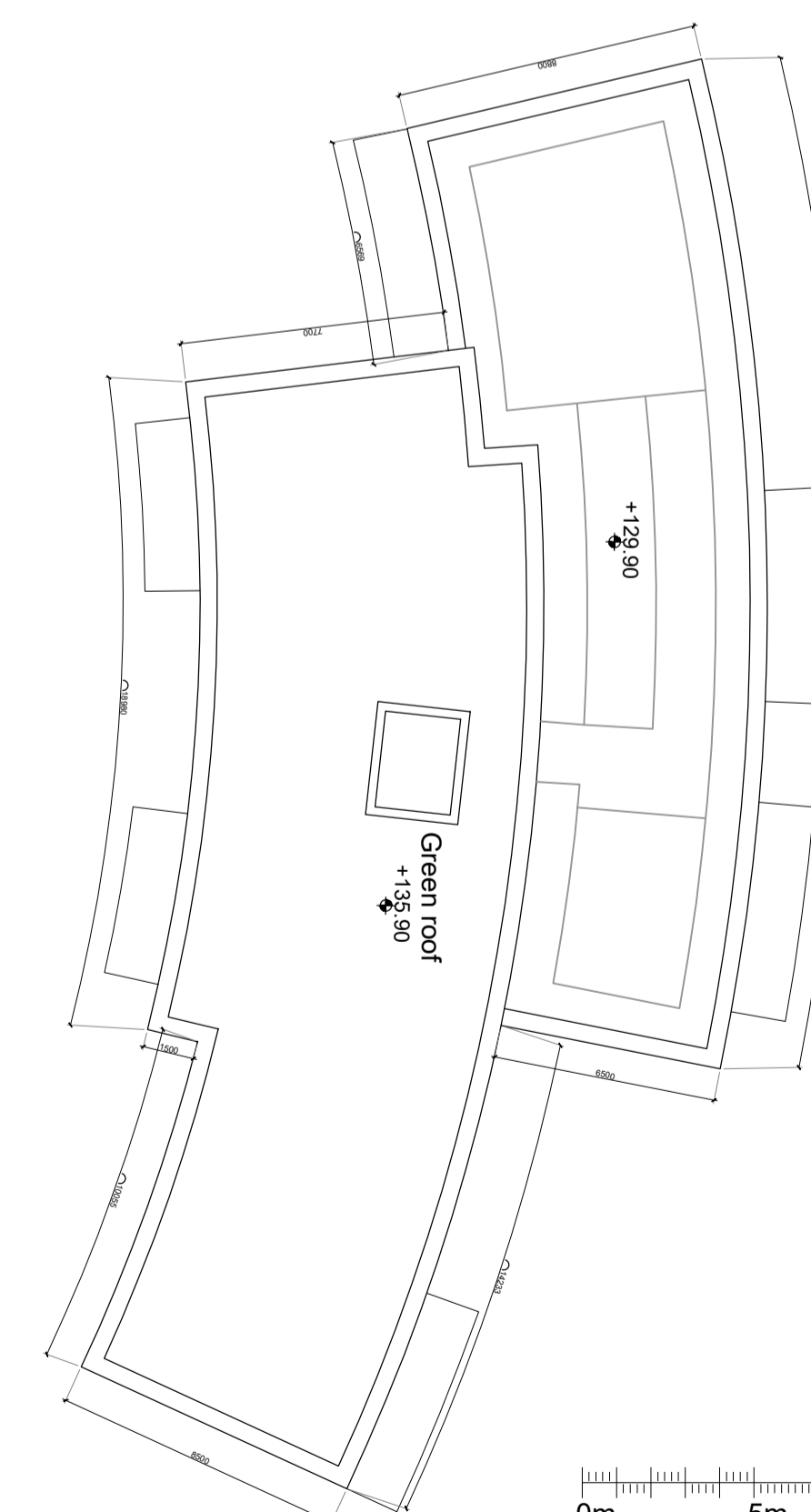
Block F: Fourth Floor Plan



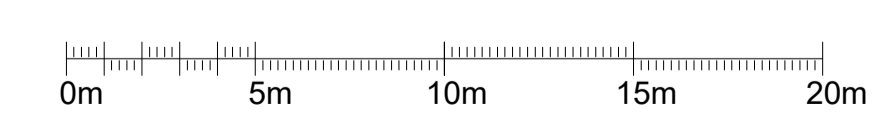
Block F: Fifth Floor Plan



Block F: Sixth Floor Plan



Block F: Roof Floor Plan



JOHN FLEMING ARCHITECTS
 103 LEESON STREET UPPER, DUBLIN 4.
 T: (01) 6689888 E: info@jfa.ie W: www.jfa.ie

CLIENT
OBSF(I) Limited

PROJECT
Housing Development at Citywest
Citywest, South Dublin

DRAWING
Block F
Proposed Plans

SCALE 1:200
DRAWN BY DC
DATE September 2019
DRAWING NUMBER P-6-001
REVISION 0

DRAWING LOCATION
w:\18_jfa\1827-03-planning\31_planning_application\312.dwg

DRAWING STATUS
PLANNING