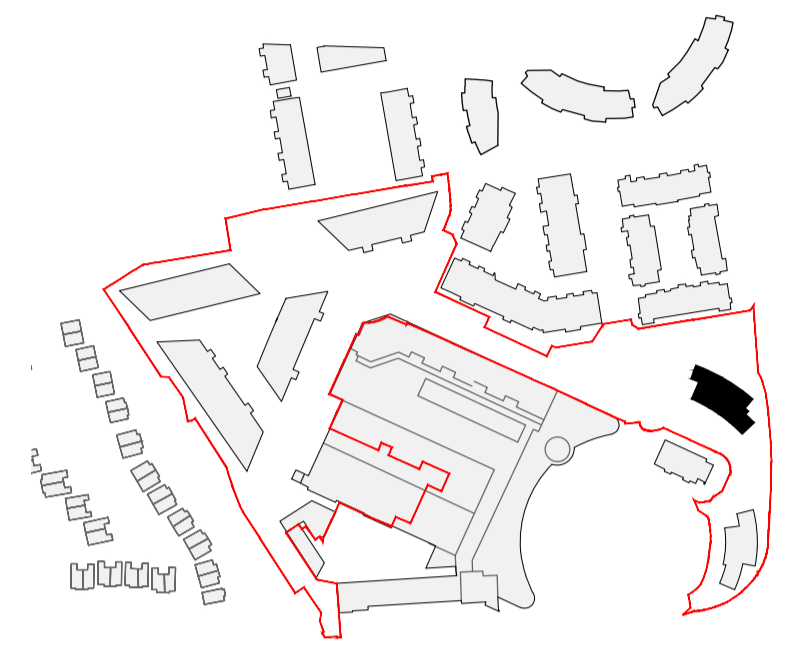


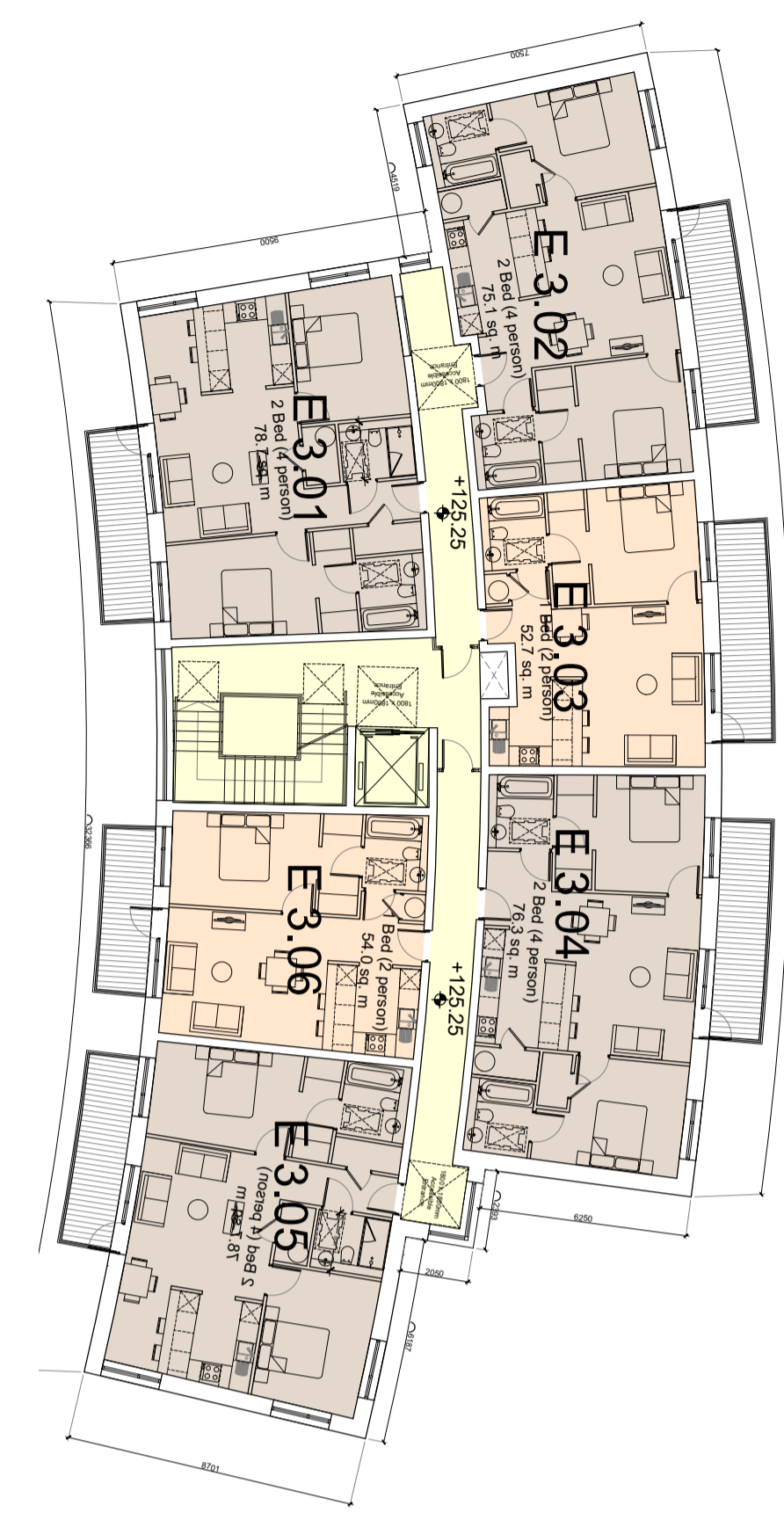
- GENERAL NOTES**
1. COPYRIGHT RESERVED
 2. EXACT SCALE DRAWING. USE FIGURED DIMENSIONS ONLY
 3. ALL DISCREPANCIES TO BE REPORTED TO ARCHITECT
 4. THE CONTRACTOR IS RESPONSIBLE FOR CHECKING ALL LEVELS AND DIMENSIONS
 5. ALL STRUCTURE TO BE TO STRUCTURAL ENGINEERS DETAILS
 6. ALL MECH & ELEC SERVICES TO SERVICES ENGINEERS DETAILS
 7. ALL PROPRIETARY ITEMS TO BE INSTALLED IN ACCORDANCE WITH MANUFACTURERS INSTRUCTIONS
 8. CONTRACTOR IS RESPONSIBLE FOR THE COORDINATION OF STRUCTURE FINISHES AND SERVICES

REV	DATE	DESCRIPTION	BY

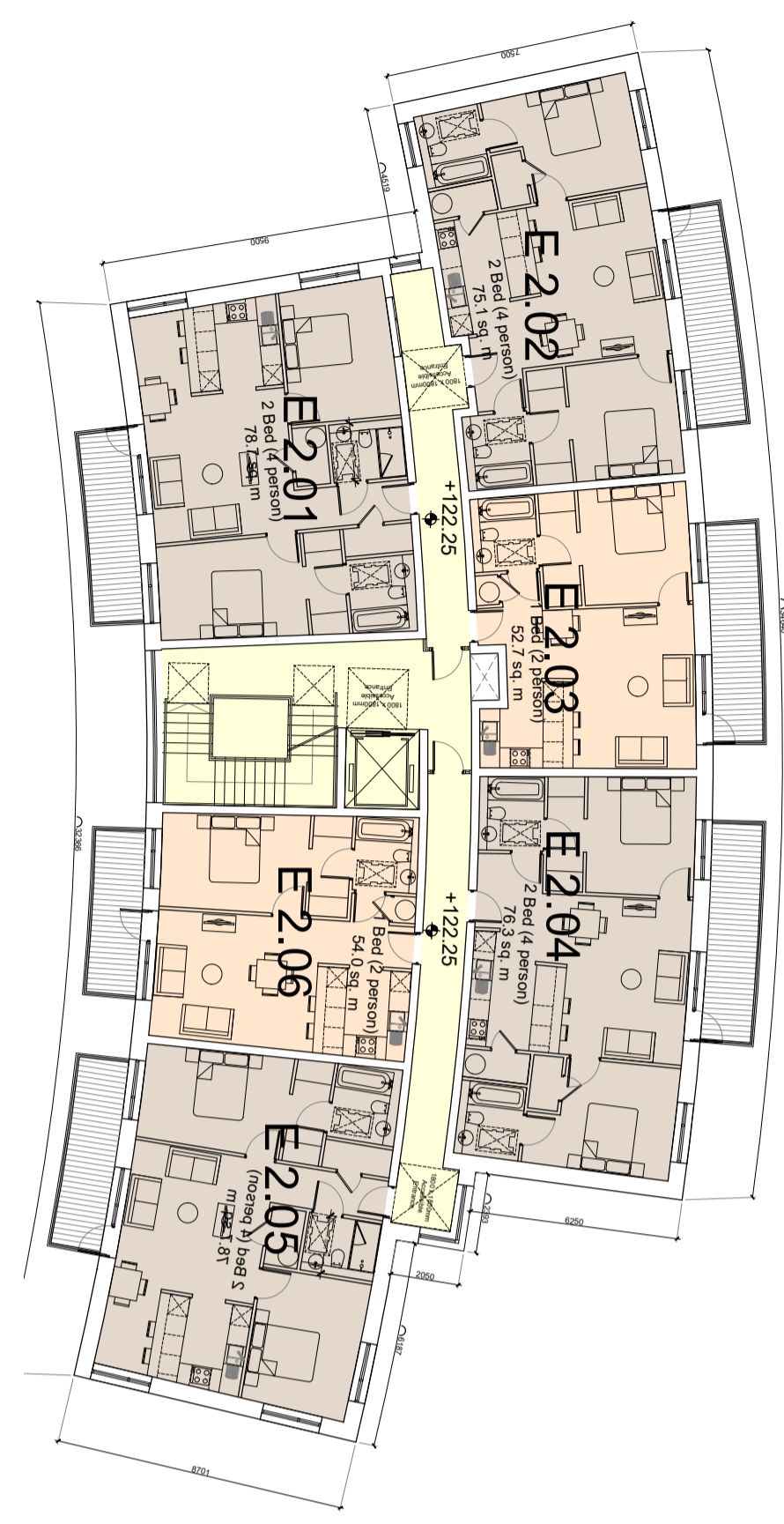


Keyplan
Not to Scale

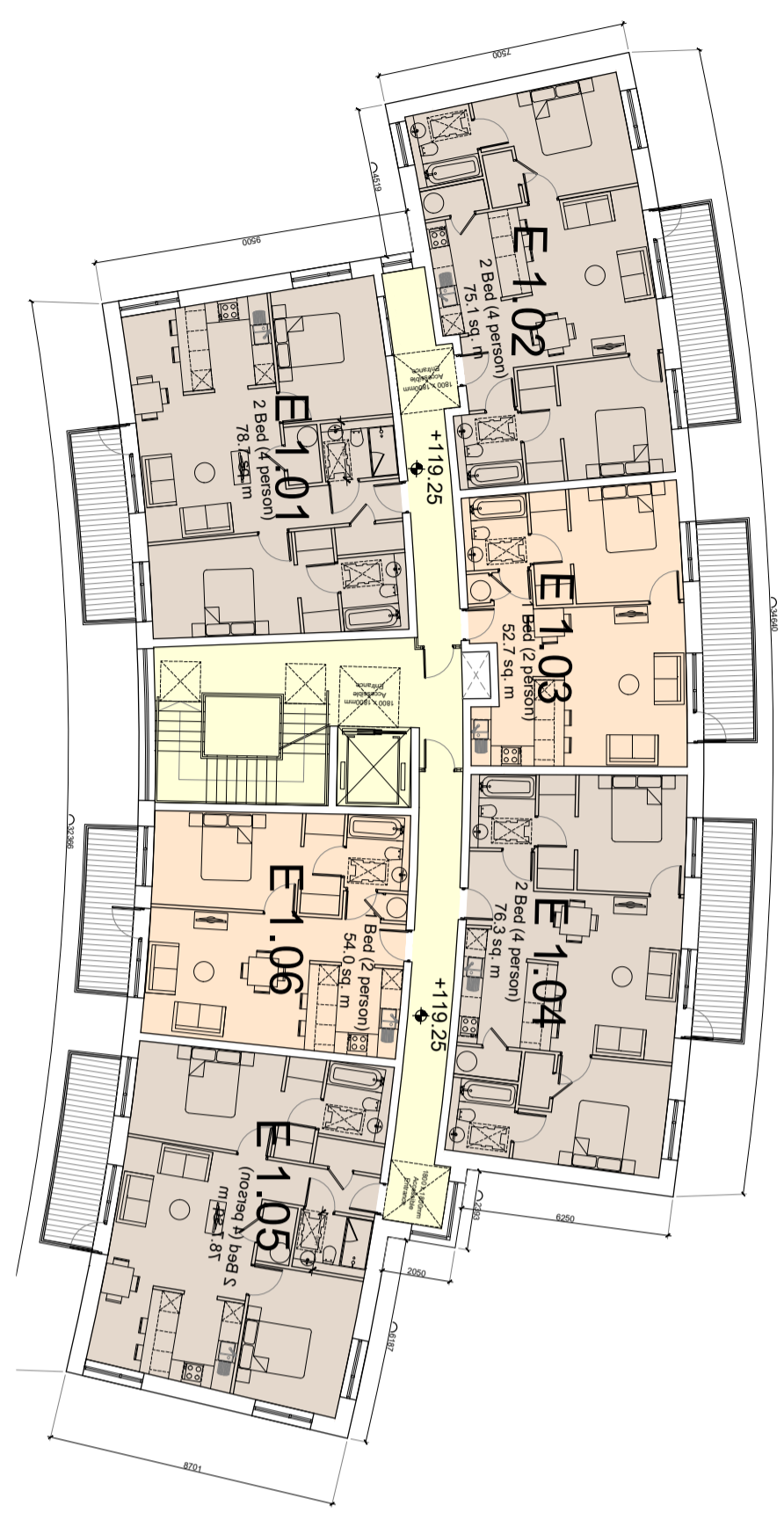
- LEGEND**
- Application Site Boundary
 - 2 Bed Apart/4 Person
 - 1 Bed Apart/2 Person
 - Retail
 - Amenity



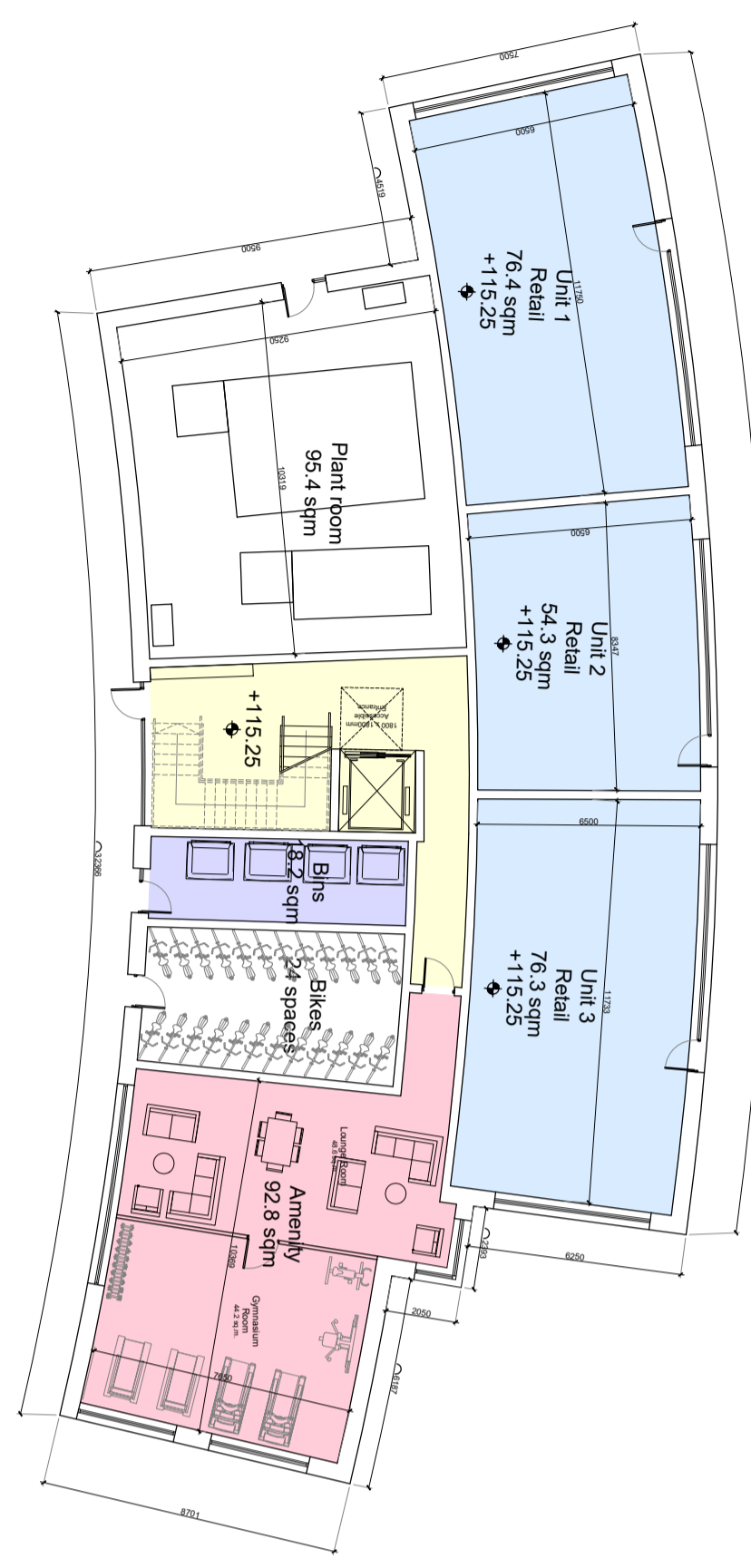
Block E: Third Floor Plan



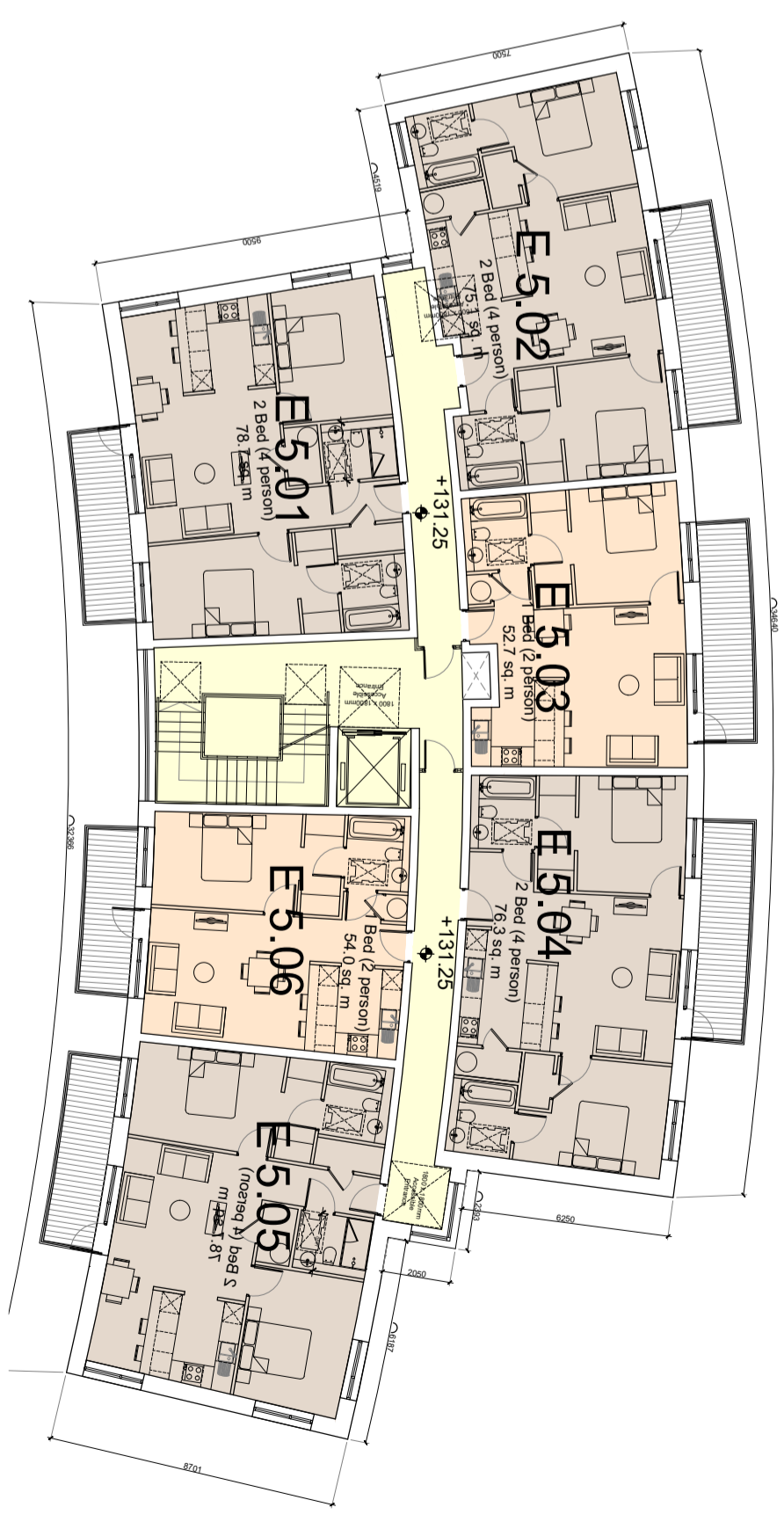
Block E: Second Floor Plan



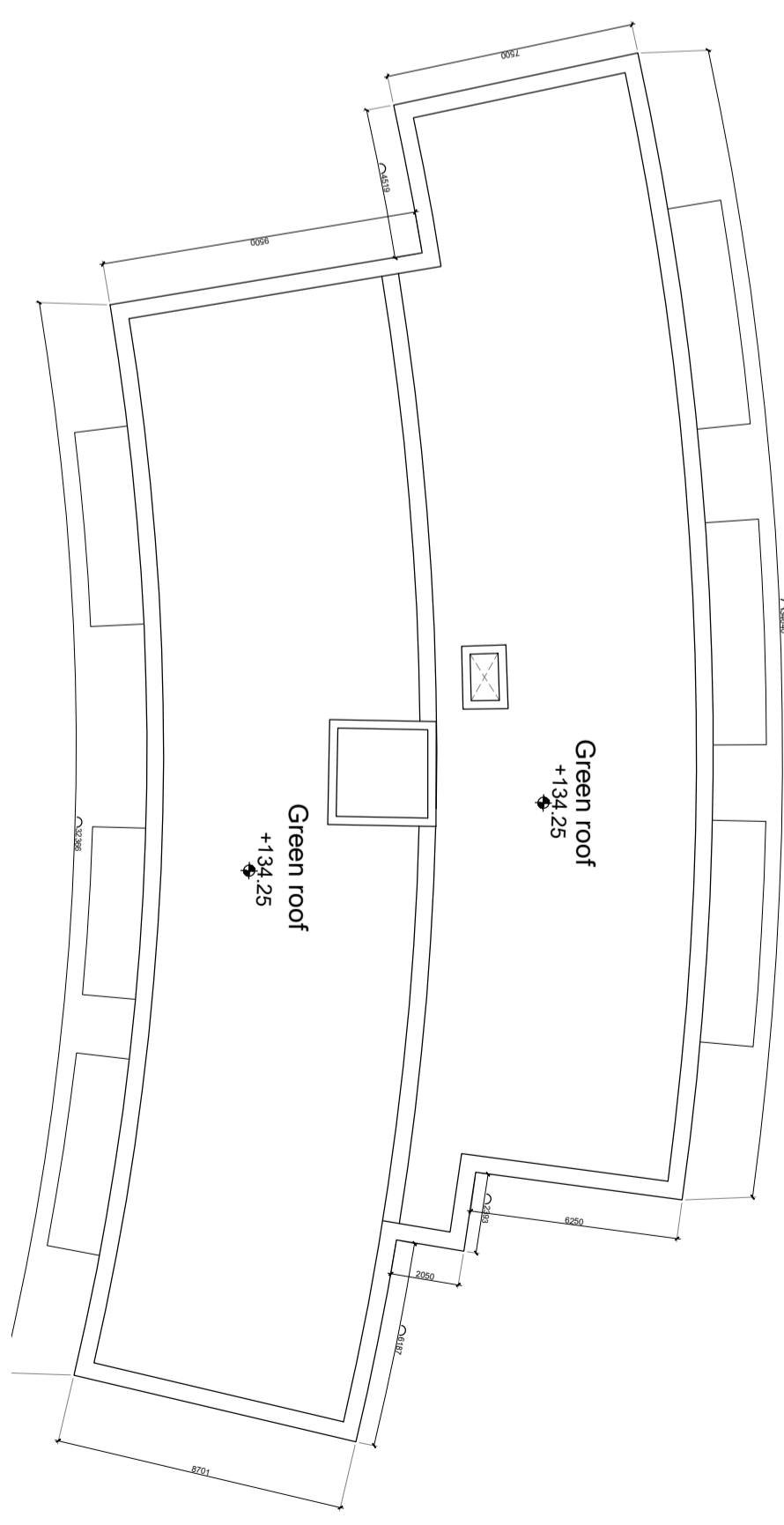
Block E: First Floor Plan



Block E: Ground Floor Plan



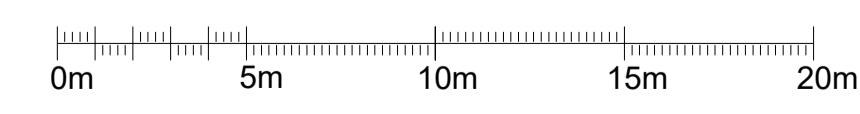
Block E: Fifth Floor Plan



Block E: Roof Floor Plan



Block E: Fourth Floor Plan



JOHN FLEMING ARCHITECTS

103 LEESON STREET UPPER, DUBLIN 4.
T: (01) 6689688 E: info@jfa.ie W: www.jfa.ie

CLIENT
OBSF(I) Limited

PROJECT
Housing Development at Citywest
Citywest, South Dublin

DRAWING
Block E
Proposed Plans

SCALE	JOB NO.
1:200	1833
DRAWN BY	DC
DATE	September 2019
DRAWING NUMBER	REVISION
P-5-001	0

DRAWING LOCATION
w:\18_john\1833\03-planning\31_planning_application\312.dwg

DRAWING STATUS
PLANNING